

When it is about **knowledge** and **experience** Roton Lifts Europe is the right address to turn to. We will make sure to give you the right attention and advice. In many cases the **quality** and **safety** of your lift is the first priority.

Because we cooperate with the most important manufacturers in Europe we can offer you different possibilities with different prices to compare.

An unique selling point is that **we can deliver fast**, this is because we cooperate with manufacturers who do have enough manpower in the factory to build your lift.

Of course we provide all **drawings** you need (also DWG), together with complete **installation**.

When desired we take care of the **maintenance** and possible malfunction of your lift.

**Our cargo lifts are provided with these standards:**

- External controls with overload indicator, up/down/emergency stop and keyswitch.
- Hydraulic unit with pump, oiltank, overload valve, lowering valve and return valve.
- Steering 24 Volt DC, advanced steering is possible (for extra stops, interlocked gates and doors).
- Automatic releveling system (when loading or unloading the platform will be kept on the right level).
- Endswitch for in between and endstops.
- Mechanical block to work safely during maintenance.
- All components, either mechanical or electrical will have the best quality.
- Safety valve in cylinder: when hydraulic hose breaks the lift will stop immediately.
- Safety against break of the chain or steel cable.

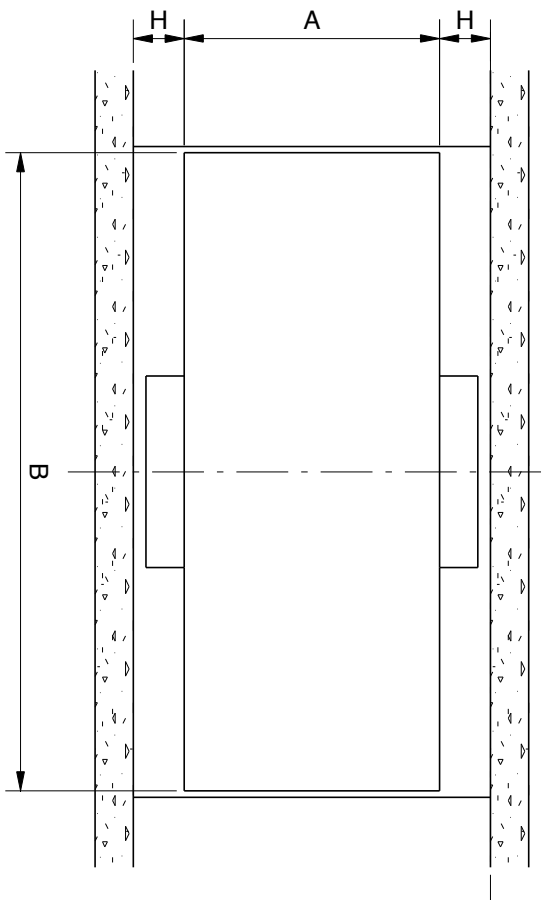


- 
- ✓ Fast delivery
  - ✓ Flexibility
  - ✓ Delivery with CE certificate
  - ✓ Available in any RAL color
  - ✓ Factory warranty of 1 year

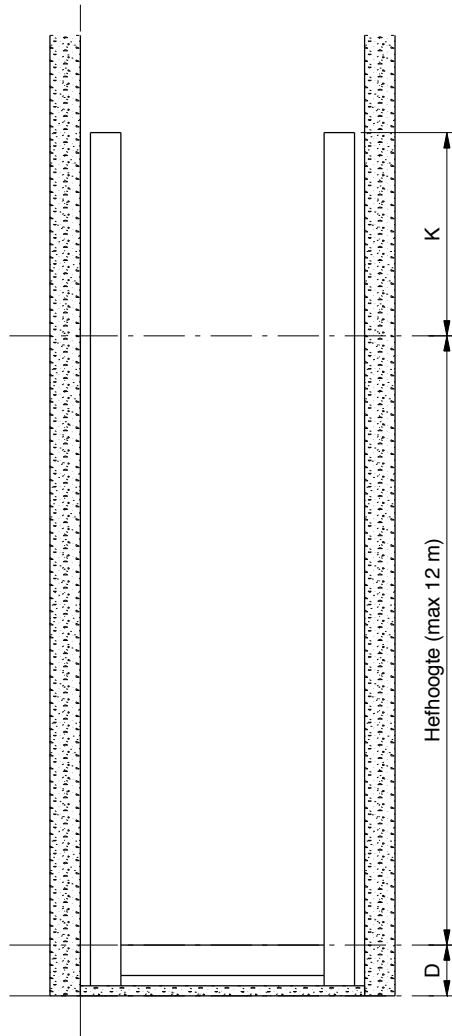
Load (kg)	A maximum (mm)	B minimum (mm)	B maximum (mm)	H (mm)*	D minimum (mm)	D maximum (mm)	K minimum (mm)	K maximum (mm)
Type Cargo 2-2	(2 masts opposite)							
1000	2000	1200	3000	200-250	150	300	1600	2000
1500	2000	1200	4000	200-250	150	300	1600	2000
2000	2500	1500	6000	250-300	200	400	1600	2200
3000	3000	1500	6000	250-300	200	400	1600	2200
4000	3000	1500	6000	250-300	250	400	1600	2200
5000	3000	1500	6000	250-300	250	400	1600	2200

Type Cargo 2-2 - 2 masts opposite

TOP VIEW:



SECTION:



\*Depends on which manufacturer floor load minimaal 200 kg/m<sup>2</sup>.